

Assure Before You Buy!
Protect Yourself from Hidden Risks!

CarAssure.com.au



Toyota Hilux

VIN# Not Registered
REG# Not Registered

Date/time of Inspection: 18/10/25
State: QLD

1:19 PM

Vehicle information

-  Brand:

Toyota
-  Year of manufacture:

2006
-  Transmission:

Automatic
-  Odometer Reading:

368,000
-  Engine capacity:
-  Model:

Hilux
-  Colour:


white
-  Fuel type:

Diesel
-  Body type:

Ute
-  Number of cylinders:

Inspection Report Summary

To know how to read the report, please see the end of report.

 Engine	Check points: 21	Notes: 3
 Electricity system	Check points: 15	Notes: 1
 Under the car	Check points: 10	Notes: 1
 Rear Axle & Drive Shaft	Check points: 9	No Notes 
 Tyres	Check points: 6	Notes: 1
 Exterior	Check points: 29	Notes: 2

 Gearbox	Check points: 11	Notes: 1
 liquids	Check points: 6	No Notes 
 Break System	Check points: 5	Notes: 1
 Interior	Check points: 28	No Notes 
 Additional	Check points: 4	No Notes 

Notes from Mechanic

Considering its age and mileage, the vehicle is in good mechanical condition. Engine, gearbox, 4x4 system, and air-conditioning all perform well. The main attention areas are the timing belt, electrical fault in the lighting system, rust prevention, and routine servicing.



Engine

Check points: 21

Notes: 3

	OK	Note	N/A
Engine Overhaul		<div></div>	
Front Crankshaft oil seal	<div></div>		
Rear Crankshaft oil seal	<div></div>		
Engine Tune-up			<div></div>
Engine Mount	<div></div>		
Oil pan gasket		<div></div>	
Valve cover gasket	<div></div>		
Oil filter housing o-ring			<div></div>
Intake manifold gasket			<div></div>
Radiator	<div></div>		
Engine timing cover gasket			<div></div>
Water pump	<div></div>		
Timing belt		<div></div>	

	OK	Note	N/A
Fuel filter	<div></div>		
Air filter	<div></div>		
Engine sump	<div></div>		
Intake manifold	<div></div>		
Radiator hose	<div></div>		
Pulley belt	<div></div>		
Engine cover			
Coolant reservoir	<div></div>		
Steering pump	<div></div>		
Windshield washer reservoir	<div></div>		
Radiator and cap	<div></div>		
Radiator coolant overflow	<div></div>		
Engine bolt disassemble signs	<div></div>		



Gyrexbox

Check points: 11

Note 1

	OK	Note	N/A
Oil pump gasket	<div></div>		
Front Crankshaft oil seal	<div></div>		
Rear Crankshaft oil seal	<div></div>		
Transmission mount	<div></div>		
Oil pan gasket	<div></div>		
Gear stick sounta	<div></div>		

	OK	Note	N/A
Oil Cooler Pipe	<div></div>		
Gear performance	<div></div>		
Transmission sump	<div></div>		
Transmission intercooler	<div></div>		
Transmission bolts	<div></div>		



Electricity system

Check points: 15

Note 1

	OK	Note	N/A
Battery		<div></div>	
Alternator	<div></div>		
Starter operation/ starter motor	<div></div>		
Lights	<div></div>		
a/c compressor	<div></div>		
Center lock	<div></div>		
Windshield wipers blades	<div></div>		
Car A/C screen	<div></div>		

	OK	Note	N/A
Car error codes	<div></div>		
A/C condenser	<div></div>		
A/C radiator	<div></div>		
A/C filter	<div></div>		
A/C hose	<div></div>		
Rear A/C	<div></div>		
Fuse box	<div></div>		

liquids

Check points: 6

Notes: 0

	OK	Note	N/A
Engine oil	✓		
Transmission oil	✓		
Brake fluid	✓		

	OK	Note	N/A
Engine coolant	✓		
Windshield Fluid	✓		
Steering Fluid	✓		

Under the car

Check points: 10

Notes: 1

	OK	Note	N/A
Idler arm	✓		
Steering hoses	✓		
Steering box	✓		
Rack and pinion steering	✓		
Rear shock absorbers	✓		
Front shock absorbers	✓		
Upper arm bushing			✓
Rear lower arm bushing			✓
Suspension spring	✓		
Stabilizer link rubber			✓
Stabilizer link			✓

	OK	Note	N/A
Cross member sub assy			✓
Inner tyre rod end			✓
Outer tyre rod end			✓
Ball joint right			✓
Ball joint left			✓
Top strut mount			✓
Front stabilizer linkage			✓
Rear stabilizer linkage			✓
Rust exhaust	✓		
Under the vehicle	✓		

Break System

Check points: 5

Notes: 1

	OK	Note	N/A
Brake master CLY			✓
Vacuum brake booster			✓
Brake hoses			✓
Brake pad front			
Brake pad rear	✓		
Front brake disc rotor	✓		
Rear brake disc rotor	✓		
Wheel bearing front			✓

	OK	Note	N/A
Wheel bearing rear			✓
Wheel bearing front rear			✓
Brake wheel cylinder front left			✓
Brake wheel cylinder front right			✓
Brake wheel cylinder rear left			✓
Brake wheel cylinder rear right			✓
Hand brake cable	✓		

Rear Axle and Drive Shaft

Check points: 9

Notes: 0

	OK	Note	N/A
Front axle	✓		
Axle difference	✓		
Difference	✓		
Axle seal front	✓		
Axle seal rear	✓		

	OK	Note	N/A
Propeller shaft/Drive shaft	✓		
Front flange	✓		
Rear flange	✓		
4WD	✓		



Interior

Check points: 28

Notes: 0

	OK	Note	N/A
Control panel Switch	✓		
Lock button	✓		
Accessories	✓		
Mirror control switch	✓		
Dashboard	✓		
Drive wheel buttons			✓
Display	✓		
Drive wheel			✓
Speakers	✓		
Roof	✓		
Air condition vents	✓		
A/C control	✓		
Sun Roof			✓
Sun visors left	✓		
Sun visor right	✓		
Left front seat	✓		

	OK	Note	N/A
Right front seat	✓		
Back mattresses	✓		
Roof mat	✓		
Right front door decoration	✓		
Front door left decoration	✓		
Back door right decoration	✓		
Back door left decoration	✓		
The left front window button	✓		
The left rear window button	✓		
The right rear glass button	✓		
The left rear glass button	✓		
Gear shift	✓		
Cup holder	✓		
Trunk opening button	✓		
Hood button	✓		



Additional

Check points: 4

Notes: 0

	OK	Note	N/A
Console	✓		
Folding mirrors			✓
Tool bag			✓
Crane			✓
Safety triangle			✓
Camera			✓
Cruise control	✓		
Preserving the path (Radar)			✓
Auto park			✓
Back curtains			✓

	OK	Note	N/A
Back screens			✓
Lipper doors			✓
Rear brake assist			✓
Front brake assist			✓
Remote engine start	✓		
4W button	✓		
Hood suspension			✓
Wheels			✓
Tyre sensors			✓



Tyres

Check points: 6

Notes: 1

	OK	Note	N/A
Front right tyre	✓		
Front left tyre	✓		
Rear right tyre	✓		

	OK	Note	N/A
Rear left tyre	✓		
Spare tyre	✓		
Same Brand, Size, Style			



Exterior

Check points: 29

Notes: 2

	OK	Note	N/A
Front Section (Overall)		<div></div>	
Front bumper condition	<div></div>		
Headlights & indicators	<div></div>		
Bonnet condition	<div></div>		
Front grill(s)	<div></div>		
Front windscreen (chips, cracks, seals)	<div></div>		
Left Side (Overall)		<div></div>	
Front left door	<div></div>		
Rear left door	<div></div>		
Left front fender	<div></div>		
Left rear fender	<div></div>		
Side mirror (left)	<div></div>		
Door pillar / structural alignment (left)	<div></div>		
Right Side (Overall)	<div></div>		
Front right door	<div></div>		
Rear right door	<div></div>		

	OK	Note	N/A
Right front fender	<div></div>		
Right rear fender	<div></div>		
Side mirror (right)	<div></div>		
Door pillar / structural alignment (right)	<div></div>		
Back Side (Overall)	<div></div>		
Rear bumper	<div></div>		
Boot / tailgate condition	<div></div>		
Rear windscreen (glass & seals)	<div></div>		
Tail lights	<div></div>		
Rear garnish / trims	<div></div>		
Roof (Overall)	<div></div>		
Roof condition (paint, dents, scratches, rust)	<div></div>		
Roof accessories (if any, e.g. rails, sunroof condition, seals)	<div></div>		

List of Notes (Issues Found)

Engine

Note:

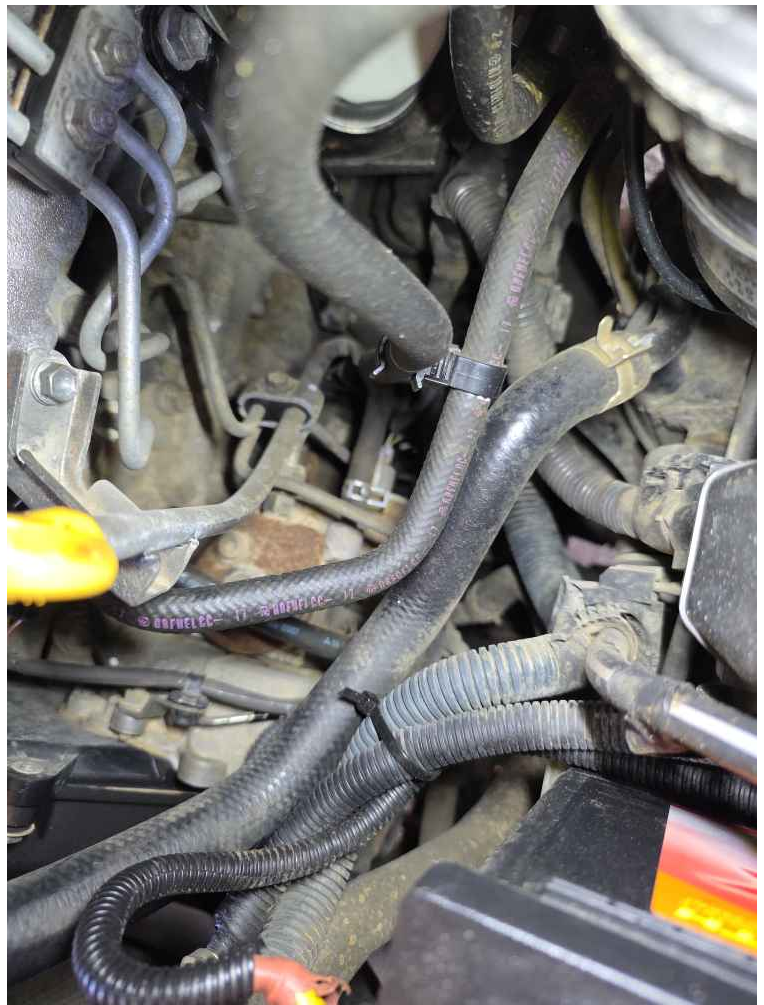
3

Engine Overhaul photo

Engine Overhaul note

Good Condition

Oil pan gasket photo



Oil pan gasket Note

probably has or had leakage before

Timing belt photo



Timing belt note

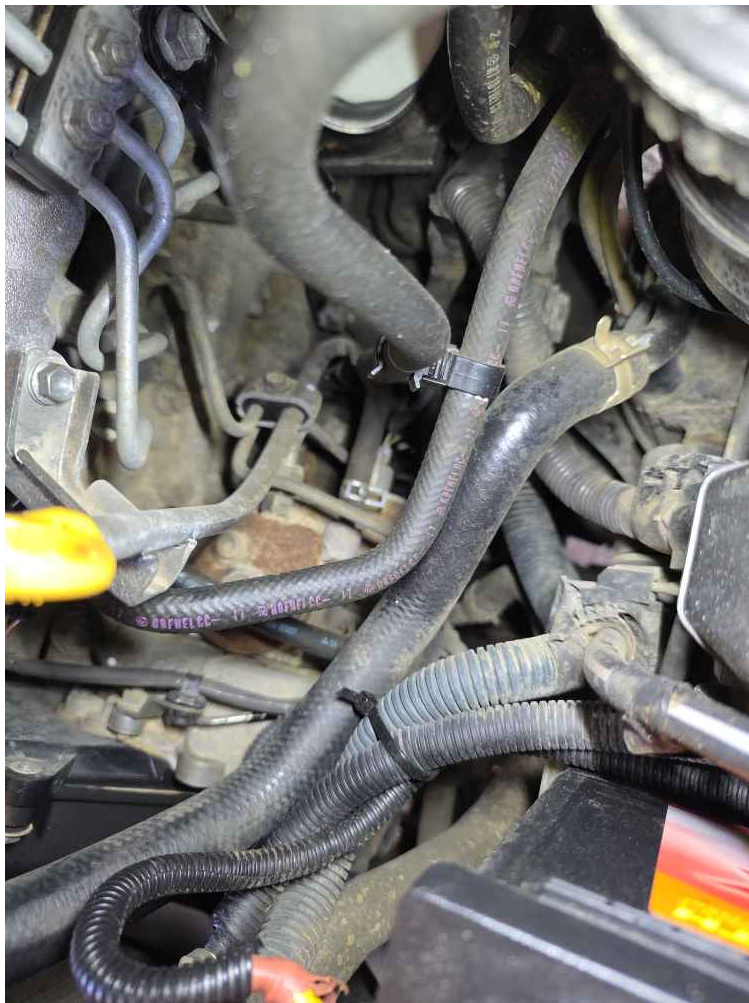
has some crack on it

Gear Box

Notes:

1

Oil pan gasket photo



Oil pan gasket Note

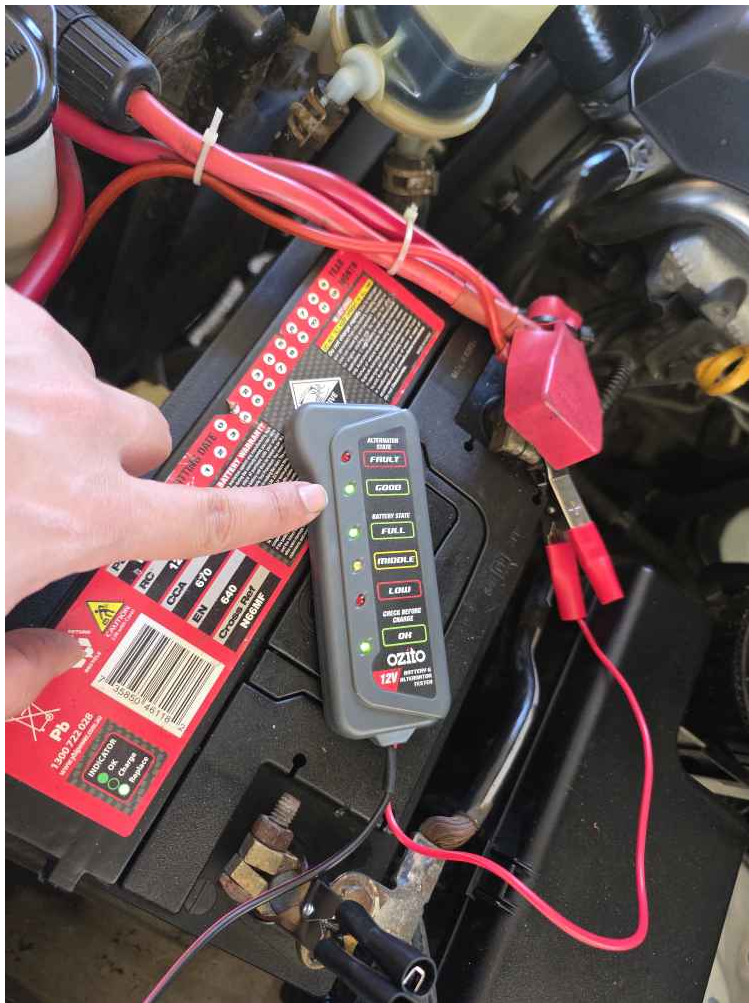
probably has or had leakage before

Electrical system

Note:

1

Battery photo



Battery note

Condition is good. but has lot of extra attached to it

Under the vehicle

Note:

1

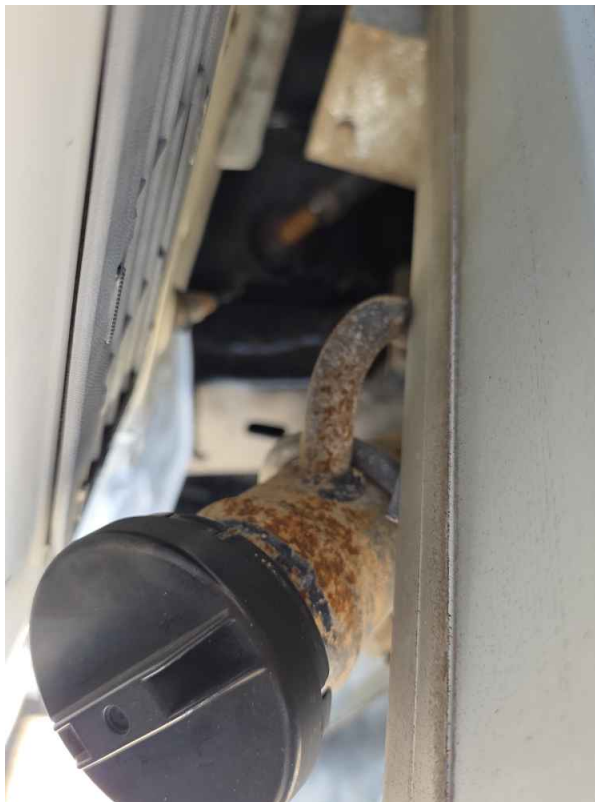
Rear lower arm bushing photo

Rear lower arm bushing note

Ball joint left photo

Ball joint left note

Rust photo



Rust note

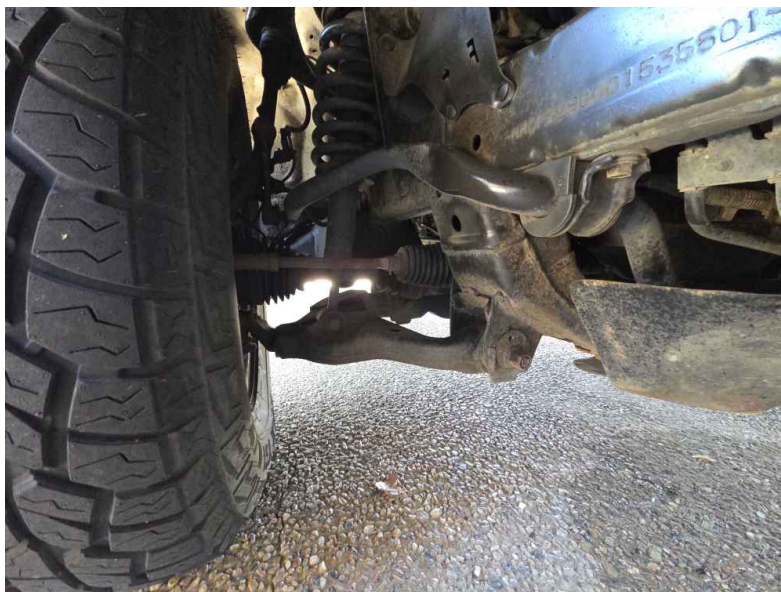
car has lot of surface rust. see photos

Break System

Note:

1

Brake pad front photo



Brake pad front note

75% capacity

Rear brake disc rotor note

Tyre

Note:

1

Same Brand, Size, Style photo



Same Brand, Size, Style note

aftermarket oversized tyres

Exterior

Note:

2

Front Section (Overall) photo



Front Section (Overall) note

some scratches and metal bar.

Front bumper condition photo

Front bumper condition note

Left Side (Overall) photo



Left Side (Overall) note

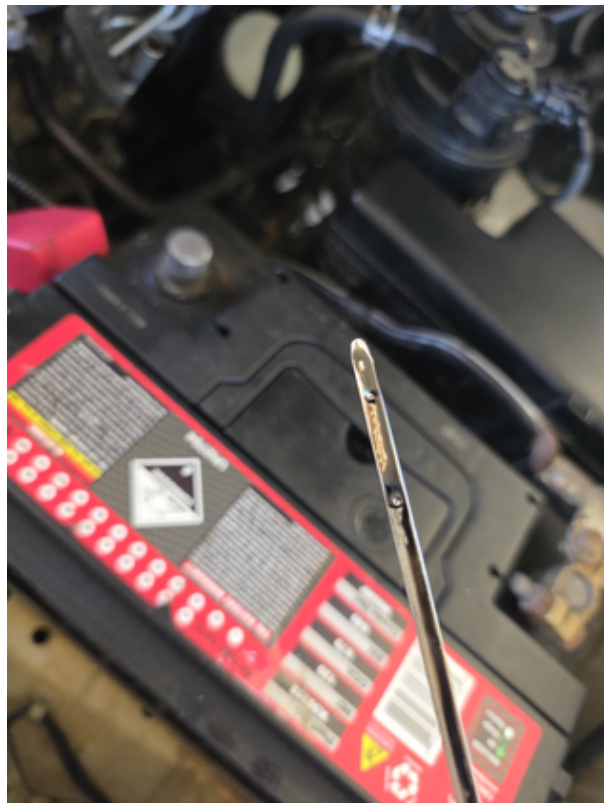
has some scratches

Exterior Photos

Multi Photo











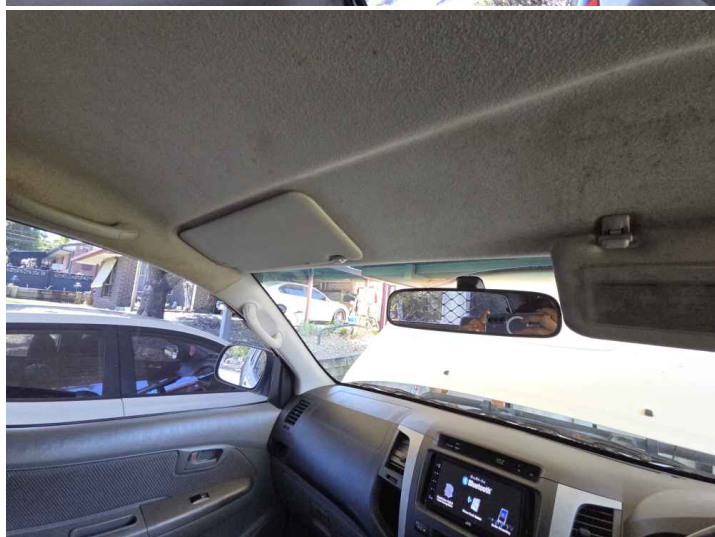
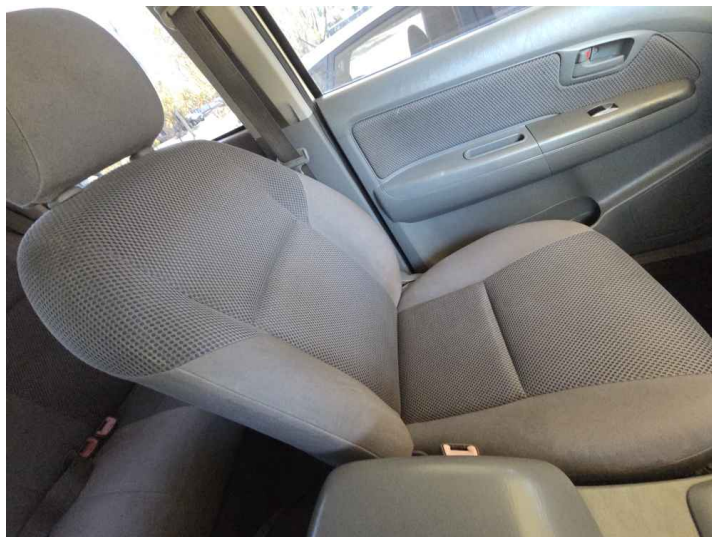
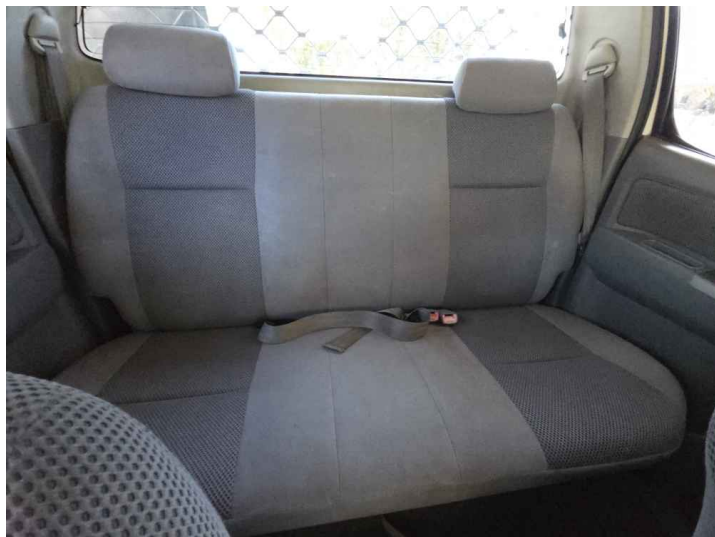


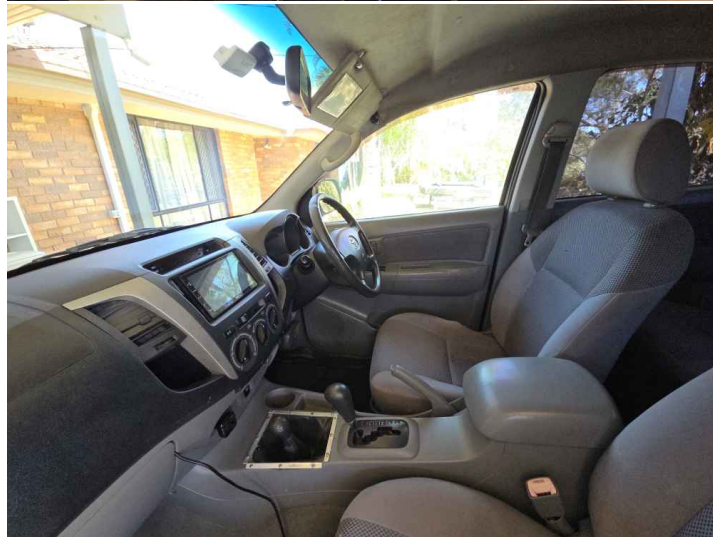
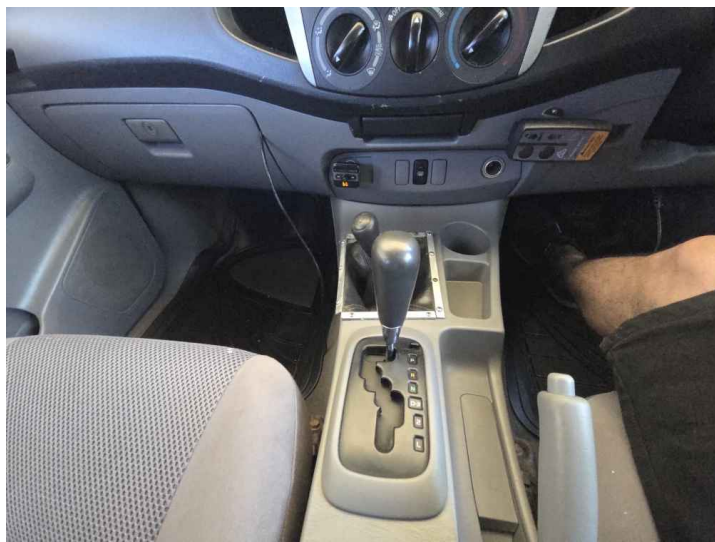


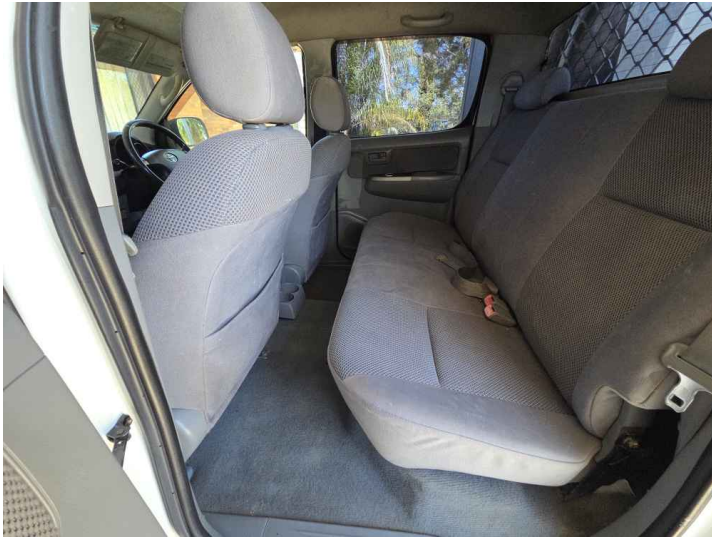


Interior Photos

Multi Photo







How to read the inspection report

The inspection is carried out by a specialized car inspector from a car company, where the inspector inspects the car in several stages:

All checkpoints have more than one status:

1. **Body:** The inspector inspects all parts of the body and identifies damage to each part of the car, such as: the front fender, the rear, Windscreen, Windows, Bumpers, and Mirrors.
2. **Electrical system:** This involves checking the car's electrical parts and ensuring they are working properly, such as: the battery and the wiring.
3. **Car mechanics:** It is divided into several main sections, which are:
 - * **Engine:** Checking the parts related to the engine's operation, such as the air filter and engine cover. Gearbox: Checking the proper operation of the car's transmission mechanism, such as the gear cooler sand gearbox face.
 - * **Brake system:** It includes the basic points of the brake system, such as: rear hub, front brakes.
 - * **Differential and Corona:** It is the part responsible for the balance and stability of the car, including the supports, such as: the propeller shaft, and the front reverse.
 - * **Under the car:** Parts and components located under the car that can only be accessed from under the car, such as: chassis arm, stabilizer bar.
 - * **Fluids:** Check the condition of essential fluids in the car, such as: engine oil, gearbox oil.
4. **Interior:** Check the car's interior for damageable parts and decorations, such as: window controls and steering wheel.

All checkpoints have more than one status:

1. **In good condition:** This means that the point has been checked and is working well or has no apparent damage.
2. **Note:** This means that there is damage or it is not working properly. A picture of each note is attached at the end of the report.
Edit this text

Disclaimer

This pre-purchase vehicle inspection has been carried out by a CarAssure Inspector to provide an independent visual assessment of the vehicle's condition at the time and location of inspection. The inspection is non-invasive and based solely on what is visibly accessible and operable during the inspection process.

The inspection does not include dismantling, removing, or testing internal components of the engine, gearbox, transmission, or other mechanical and electrical systems. It may not identify intermittent faults, hidden issues, or defects that appear only under specific conditions such as high-speed driving, temperature changes, or future use.

The inspection does not include checks for rust, corrosion, flood or water damage, previous accident repairs, or cosmetic paintwork beyond what is visible at the time of assessment.

No coolant pressure test, compression test, or diagnostic scanning is performed unless explicitly stated.

This report is not a Certificate of Roadworthiness or Safety Certificate (RWC) and should not be relied upon as proof of the vehicle's roadworthiness, compliance, or fitness for registration.

The findings and opinions presented in this report represent the professional judgment of the CarAssure Inspector and are provided for informational purposes only. The final decision to purchase or reject the vehicle remains the sole responsibility of the buyer.

CarAssure provides no guarantee or warranty that this inspection will identify every defect or prevent future mechanical or electrical failure.

CarAssure and its inspectors accept no liability or responsibility for any issues, damages, losses, or costs arising after the inspection or following the purchase of the vehicle.